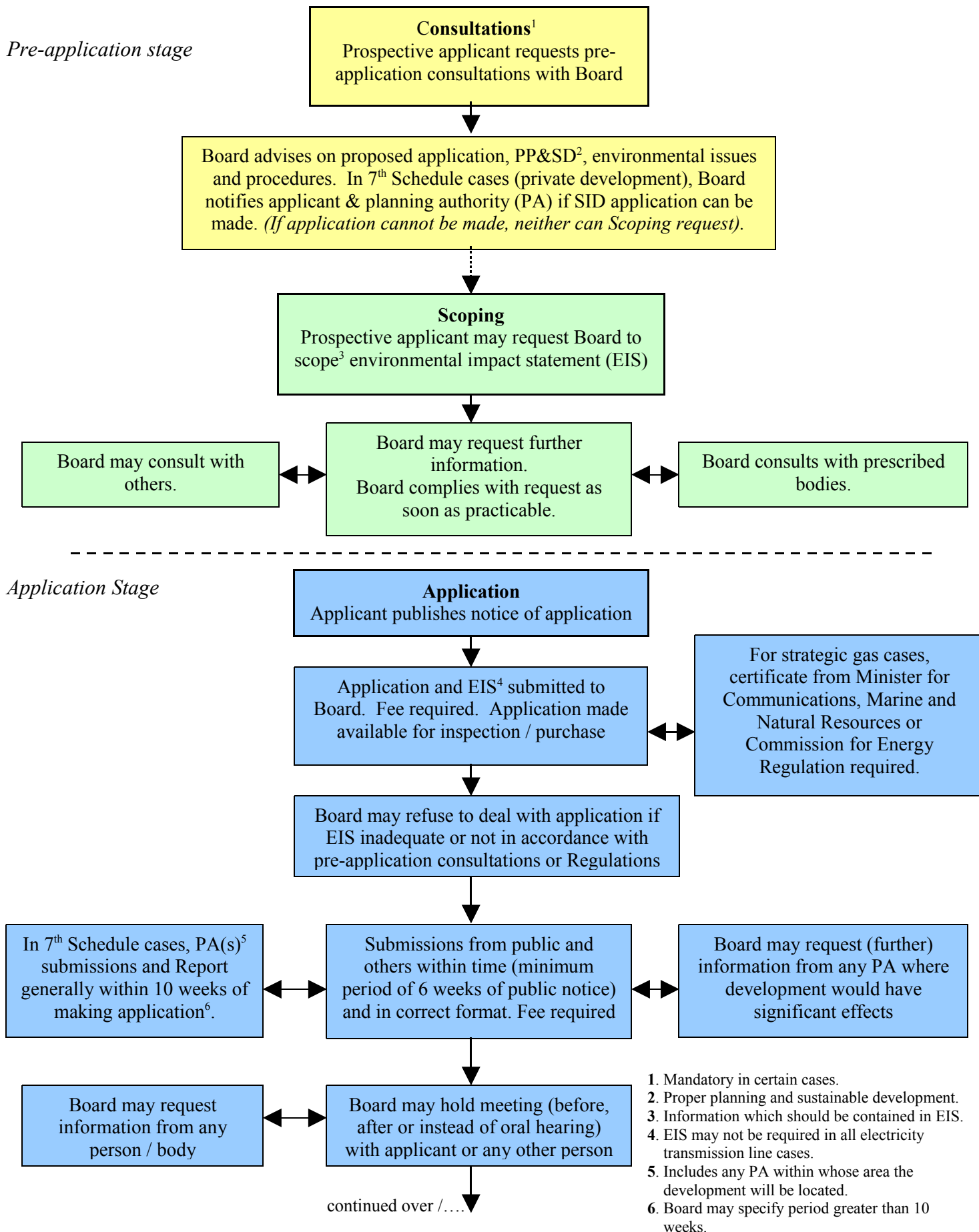


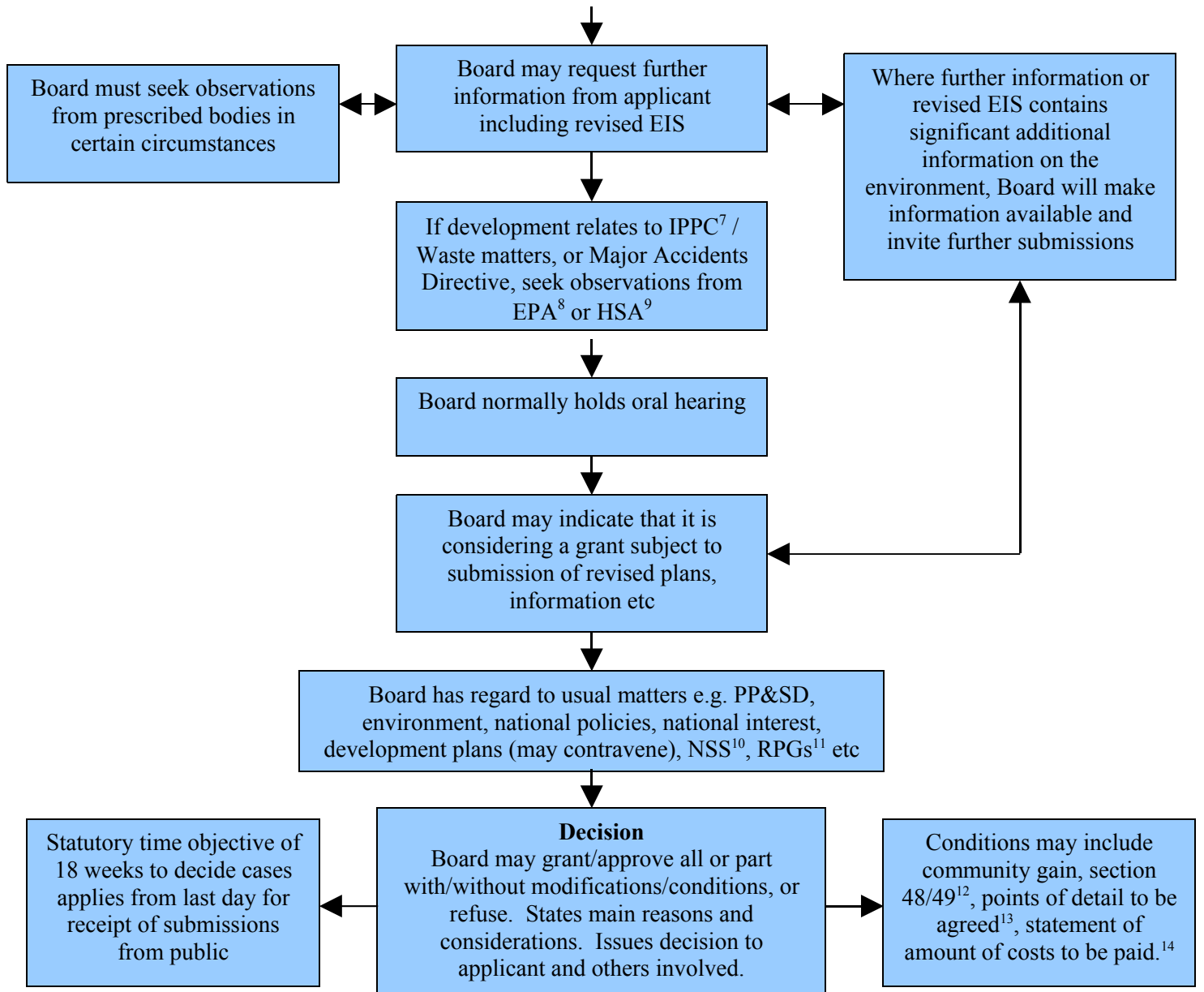
# Strategic Infrastructure Development (SID)

## Flowchart

(This flowchart gives a general indication of the stages involved in SID cases. However, procedures can vary depending on the particular type of SID involved)



1. Mandatory in certain cases.
2. Proper planning and sustainable development.
3. Information which should be contained in EIS.
4. EIS may not be required in all electricity transmission line cases.
5. Includes any PA within whose area the development will be located.
6. Board may specify period greater than 10 weeks.



*Post-decision stage*

Board may amend decision to correct clerical error or to clarify what it intended to convey. May invite submissions from relevant persons. Change may not result in material alteration to development as permitted /approved.

Developer may request alteration to development

Board considers whether alteration would be material or have significant effects on the environment. If not, makes decision.

If alteration is material, Board directs that information is made available to specified persons, class of persons or public, and seeks observations. Makes decision on request.

If alteration would have significant effects on the environment, general EIA provisions will apply including new EIS, public notice, fresh submissions from public etc.

7. Integrated pollution prevention and control.  
 8. Environmental Protection Agency.  
 9. Health and Safety Authority.  
 10. National Spatial Strategy.  
 11. Regional Planning Guidelines  
 12. Section 48/49 financial contribution conditions.  
 13. Only applies to 7<sup>th</sup> Schedule cases.  
 14. Must issue with 7<sup>th</sup> Schedule decision. In other cases, where it applies, it may issue at a later date.